



TSX.V: BYN | OTCQB: BYAGF

BUILDING GOLD RESOURCES IN YUKON

AurMac Project: A Geochemical Exploration Success Story

James Thom, Senior Geologist
Tara Christie, President and CEO

October 29, 2021



FORWARD LOOKING STATEMENT

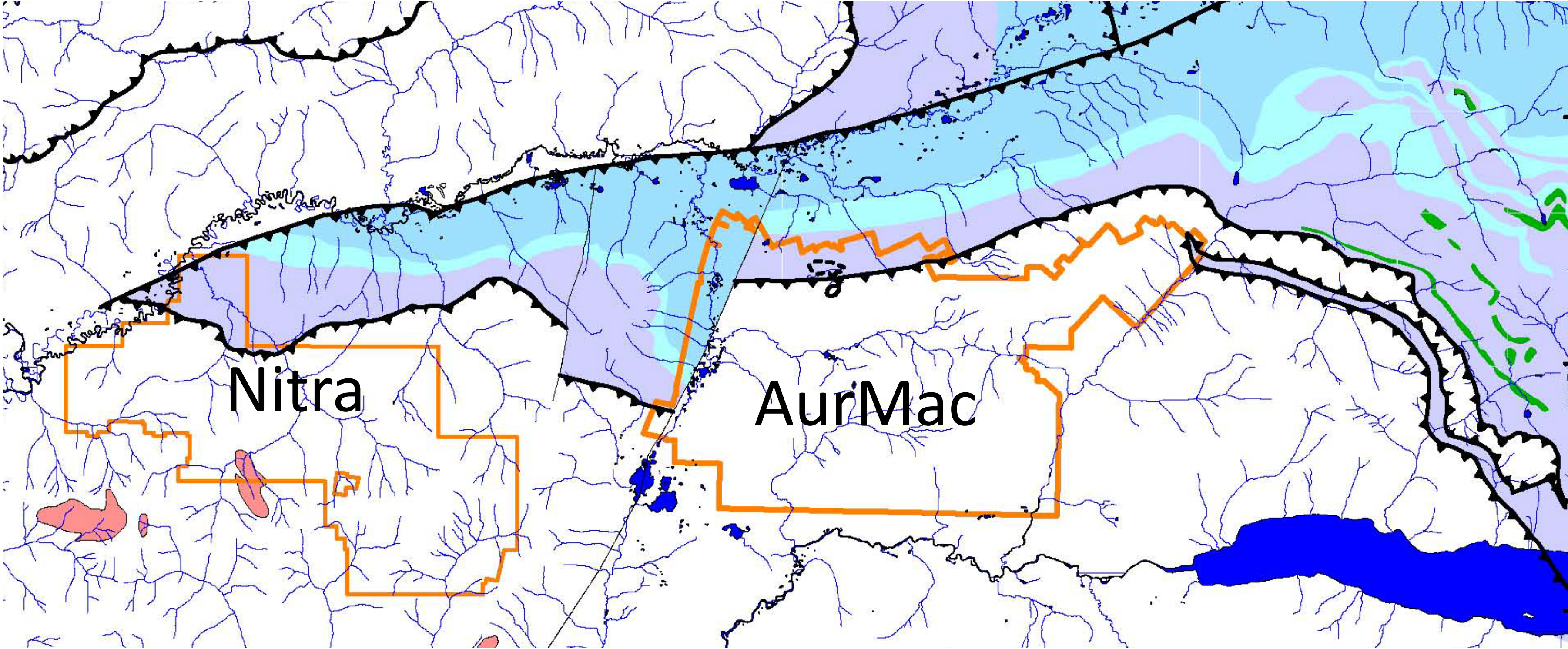
This presentation contains forward-looking information, which is not comprised of historical facts. Such information can generally be identified by the use of forwarding-looking wording such as “may”, “will”, “expect”, “estimate”, “anticipate”, “intend”, “believe” and “continue” or the negative thereof or similar variations. Forward-looking information involves risks, uncertainties and other factors that could cause actual events, results, performance, prospects and opportunities to differ materially from those expressed or implied by such forward-looking information. Forward looking information in this presentation includes, but is not limited to, the potential for the Powerline and Airstrip Deposits and Aurex Hill Zone to host on-surface and near-surface gold mineralization; the future expansion of the mineralized footprint at the Powerline and Airstrip Deposits; the expected timing of the remaining assay results from the 2021 exploration program; future drilling at the AurMac Property and the expected timing thereof; the timing and expected scope of the planned 2022 AurMac Property exploration program; Banyan’s objectives, goals or future plans; statements regarding exploration expectations, exploration or development plans; and mineral resource estimates. Factors that could cause actual results to differ materially from such forward-looking information include, but are not limited to, uncertainties inherent in resource estimates, capital and operating costs varying significantly from estimates, the preliminary nature of metallurgical test results, delays in obtaining or failures to obtain required governmental, environmental or other project approvals, political risks, uncertainties relating to the availability and costs of financing needed in the future, changes in equity markets, inflation, changes in exchange rates, fluctuations in commodity prices, environmental liability and insurance; reliance on key personnel; the potential for conflicts of interest among certain officers, directors or promoters with certain other projects; competition; dilution; the volatility of common share price and volume, delays in the development of projects and the other risks involved in the mineral exploration and development industry, enhanced risks inherent to conducting business in any jurisdiction, and those risks set out in Banyan’s public documents filed on SEDAR. Although Banyan believes that the assumptions and factors used in preparing the forward-looking information in this presentation are reasonable, undue reliance should not be placed on such information, which only applies as of the date of this presentation, and no assurance can be given that such events will occur in the disclosed time frames or at all. Banyan disclaims any intention or obligation to update or revise any forward-looking information, whether as a result of new information, future events or otherwise, other than as required by law.

Cautionary Note to U.S. Investors Concerning Estimates of Measured, Indicated and Inferred Resources: This presentation uses the terms “Measured”, “Indicated” and “Inferred” Resources. U.S. investors are advised that while such terms are recognized and required by Canadian regulations, the Securities and Exchange Commission does not recognize them. “Inferred Resources” have a great amount of uncertainty as to their existence, and great uncertainty as to their economic and legal feasibility. It cannot be assumed that all or any part of an inferred resource will ever be upgraded to a higher category. Under Canadian rules, estimates of Inferred Resources may not form the basis of feasibility or other economic studies. U.S. investors are cautioned not to assume that all or any part of an Inferred Mineral Resource exists, or is economically or legally mineable.

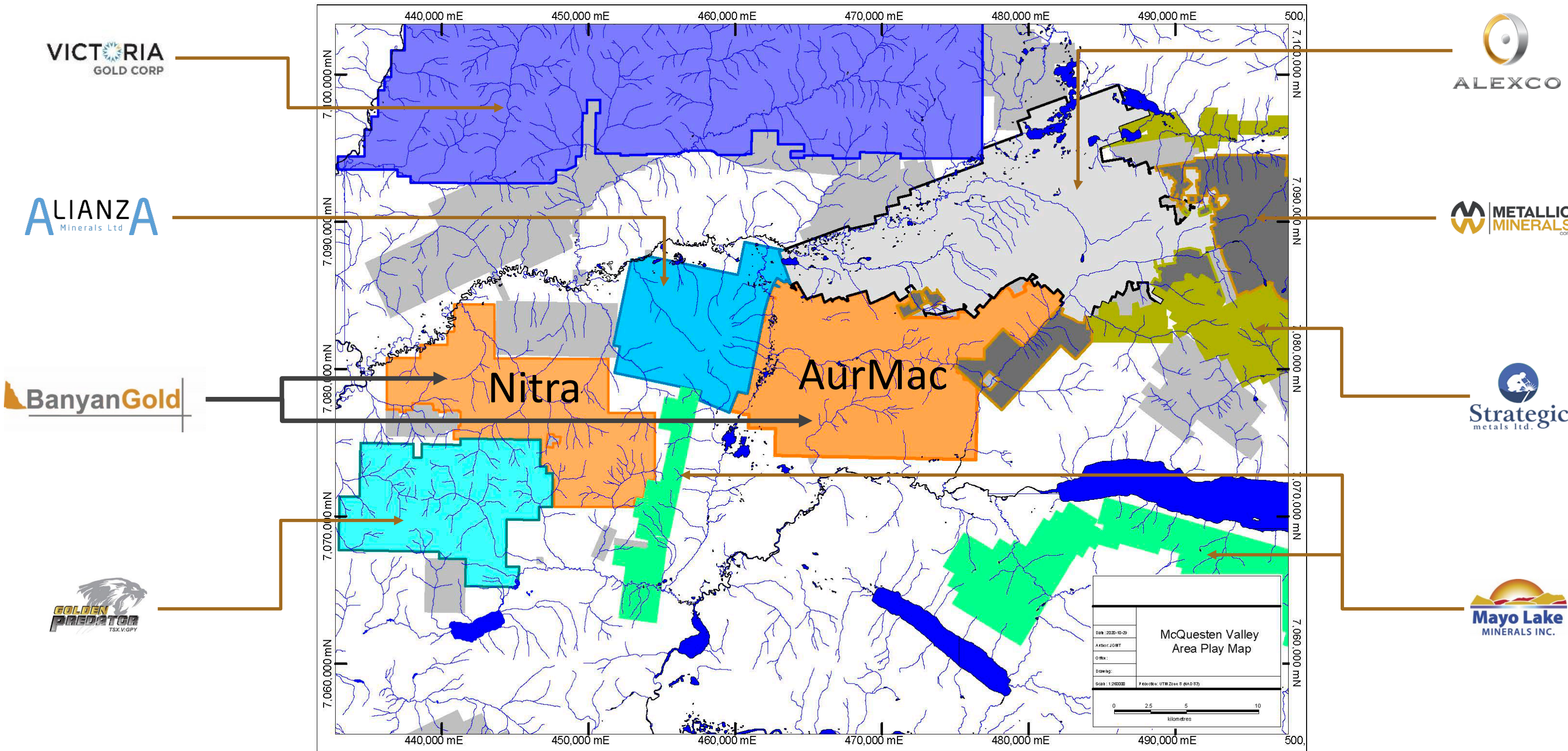
Qualified Person:

Paul D. Gray, P.Geo. is a “qualified person” within the meaning of such term as set forth in National Instrument 43-101 of the Canadian Securities Administrators, has verified and supervised the preparation of all of the scientific and technical information contained in this presentation.

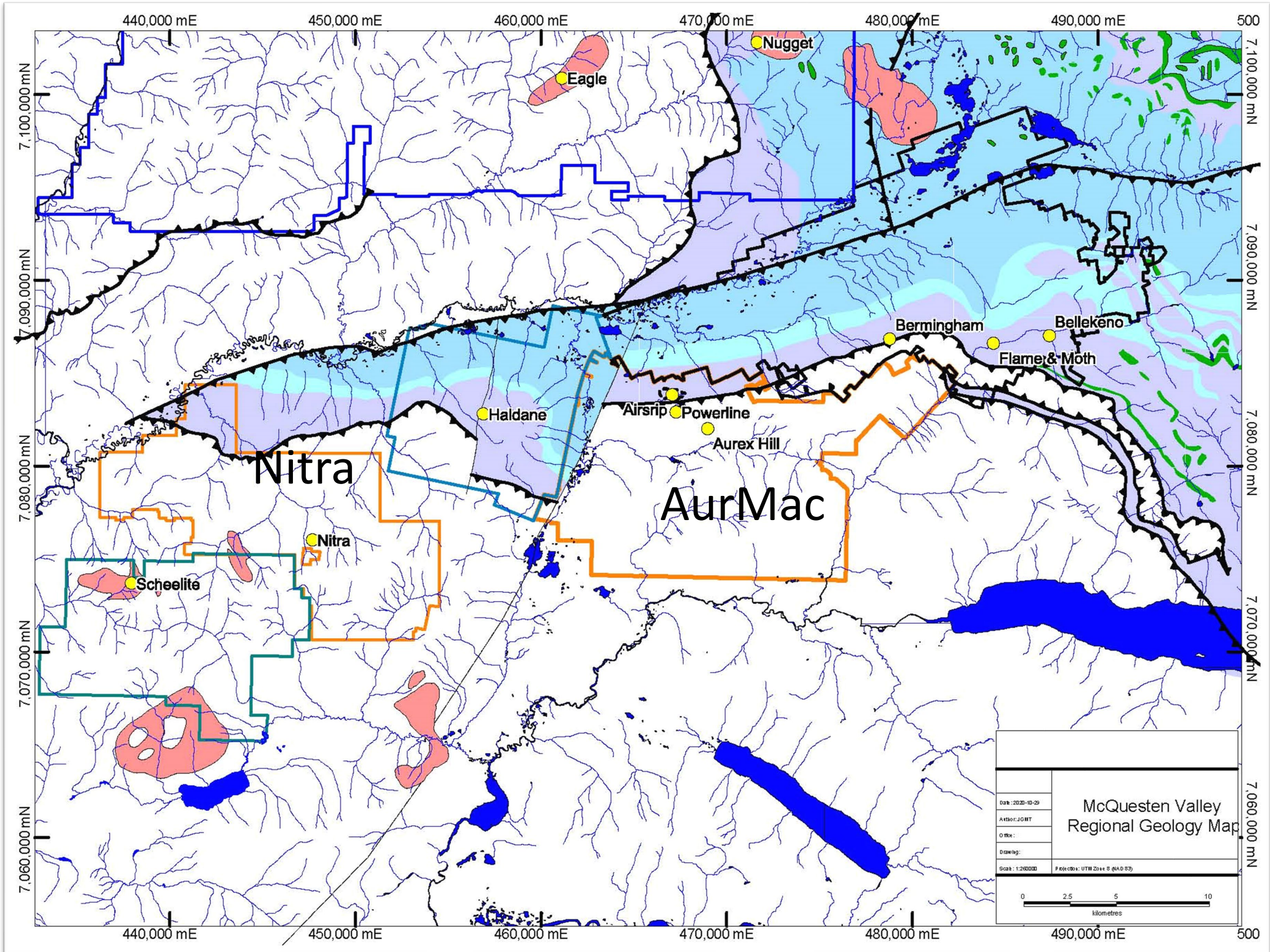
SEDIMENT-HOSTED, INTRUSION RELATED GOLD SYSTEM: PERSPECTIVES FROM THE AURMAC PROJECT, YUKON



ADJACENT MINES AND EXPLORERS



REGIONAL GEOLOGY



Intrusion-Hosted

- Structurally Controlled
- Eagle Mine, Scheelite Dome

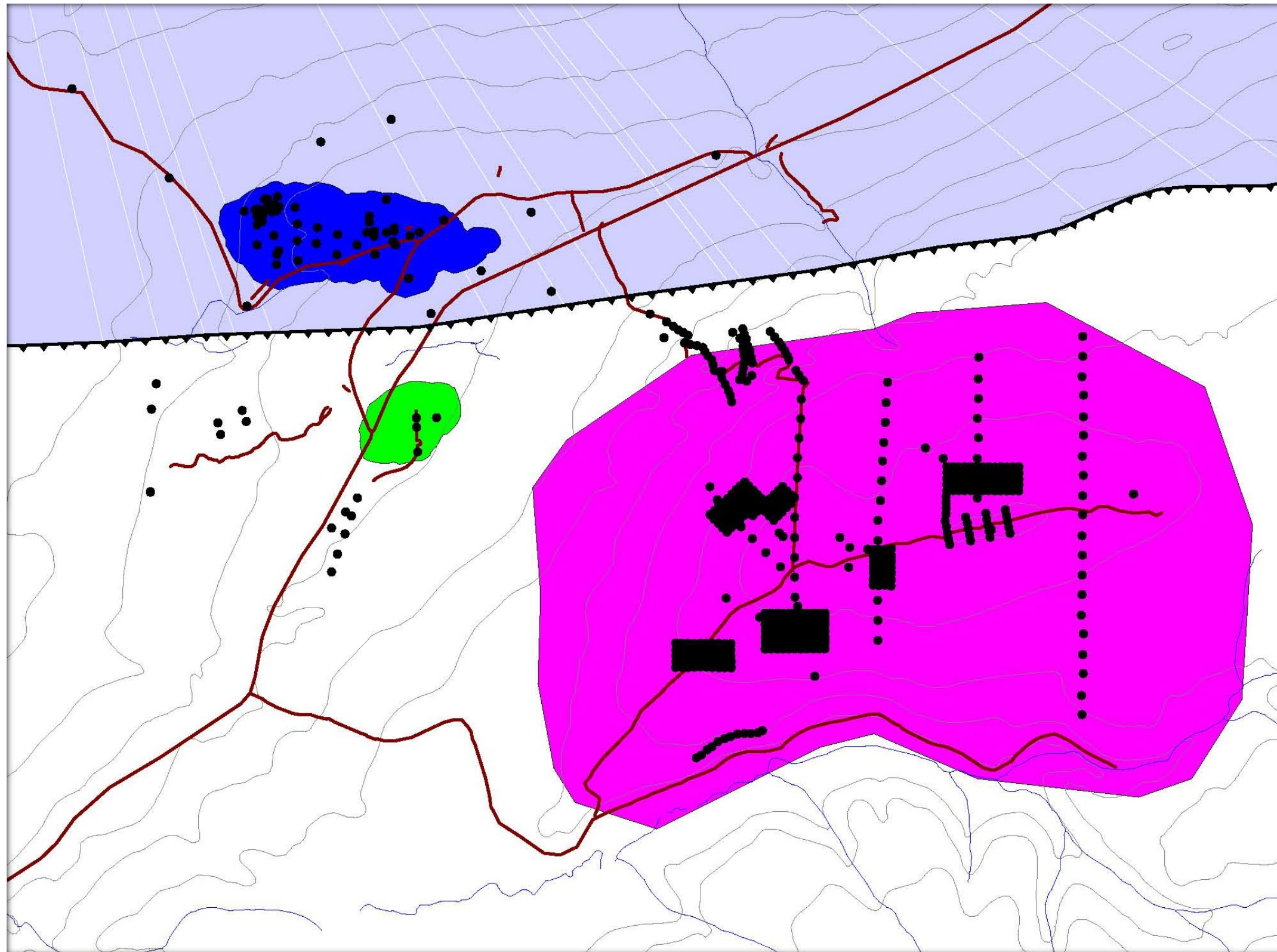
Sediment-Hosted

- Structurally Controlled
- Scheelite Dome, Mt. Haldane, Birmingham, Flame & Moth, Bellekeno, Keno Silver Project, Mt. Haldane, Carlin-Roop, Scheelite Dome

Sediment-Hosted

- Stratigraphically Controlled
- Aur-Mac, Scheelite Dome

AURMAC DRILLING COMPILATION BY ZONE



■ McQuesten

- 7,690 m of diamond drilling in 53 holes
- 271 m of reverse circulation in 10 holes
- Au mineralization in pyrrhotite-retrograde skarn-like lenses, quartz-arsenopyrite-pyrite veins, and fault breccias

■ Aurex





- 12,530 m of rotary percussion drilling in 442 shallow holes
- 4,644 m of diamond drilling in 30 holes
- Au mineralization in pyrrhotite-skarn lenses, quartz-arsenopyrite-pyrite veins.

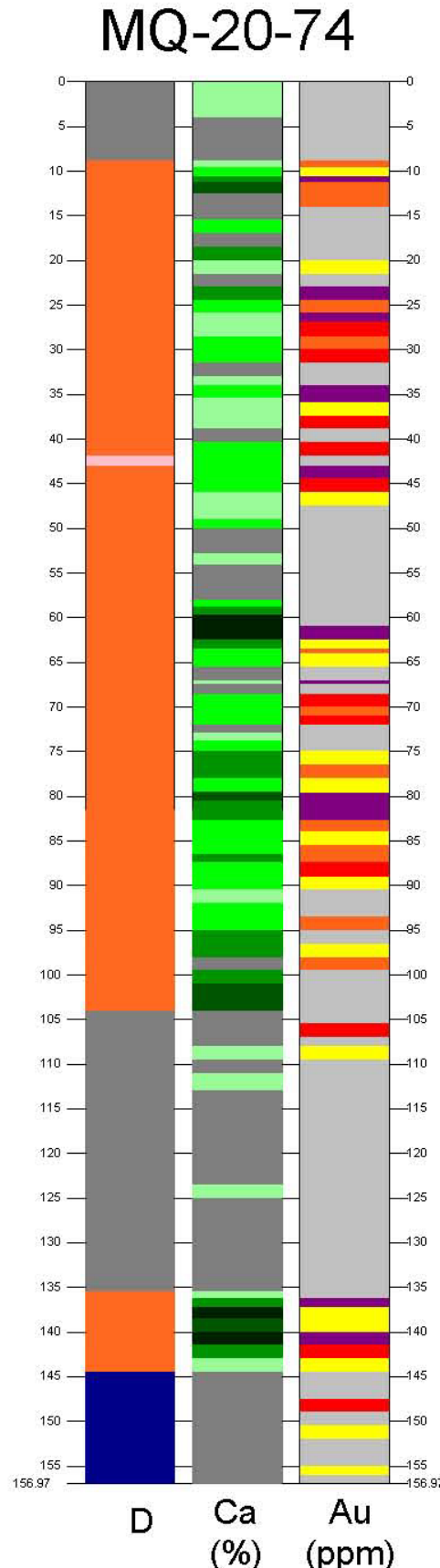
CHEMO-STRATIGRAPHIC MODELLING: THE KEY TO UNLOCKING AURMAC'S VALUE POTENTIAL

Assay Legend

Au (ppm)	Ca (percent)
<0.1	<0.9
0.1 - 0.2	0.9 - 1.8
0.2 - 0.4	1.8 - 3.6
0.4 - 0.8	3.6 - 7.2
>0.8	>7.2

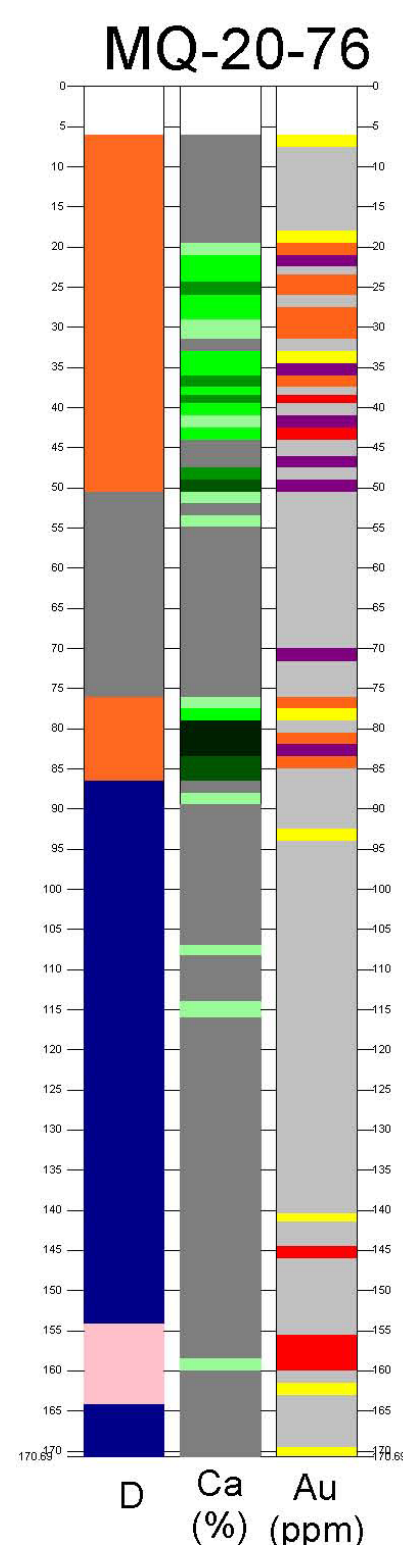
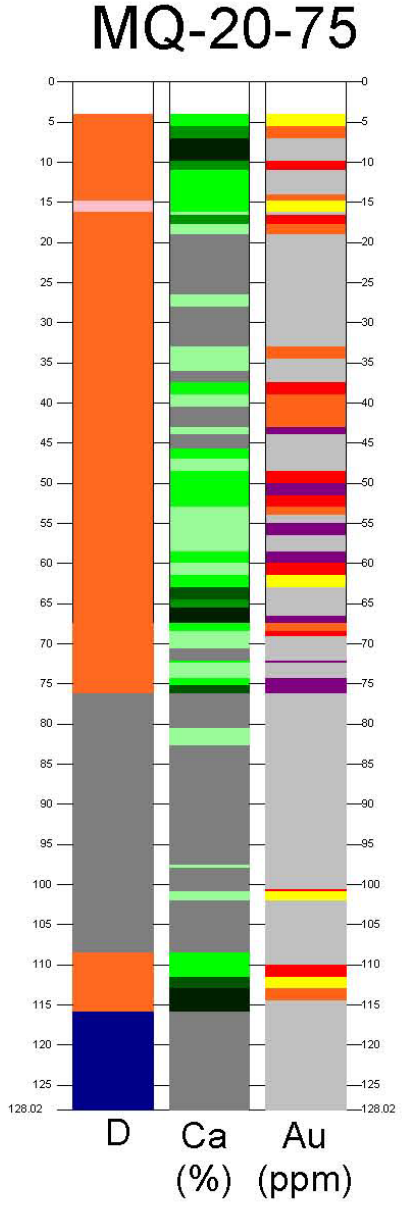
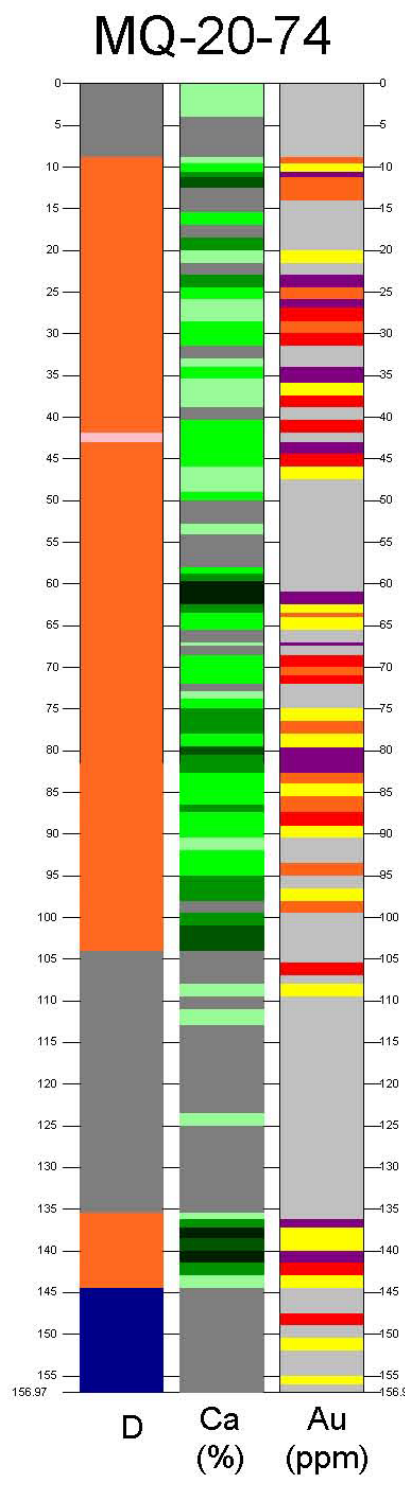
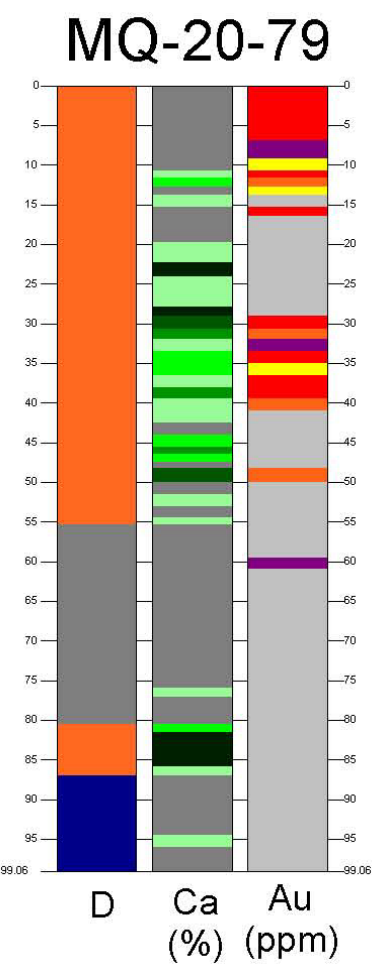
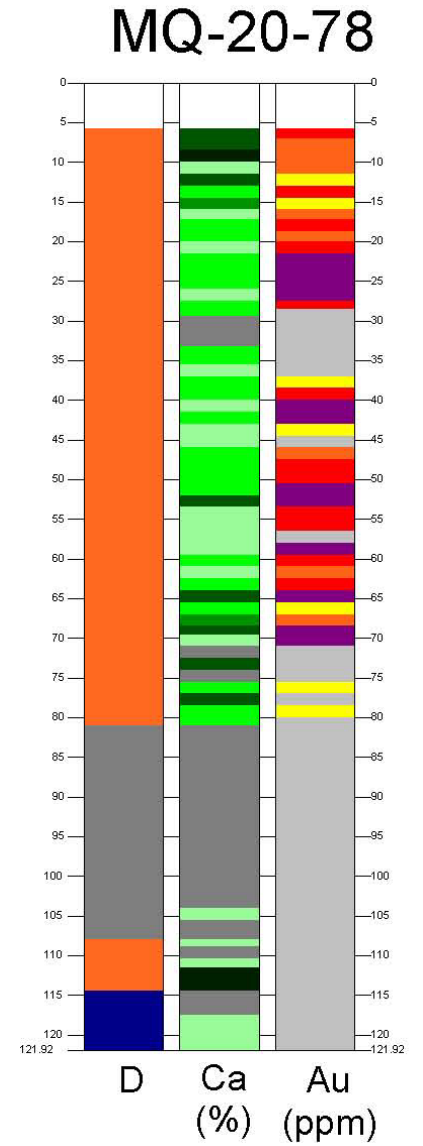
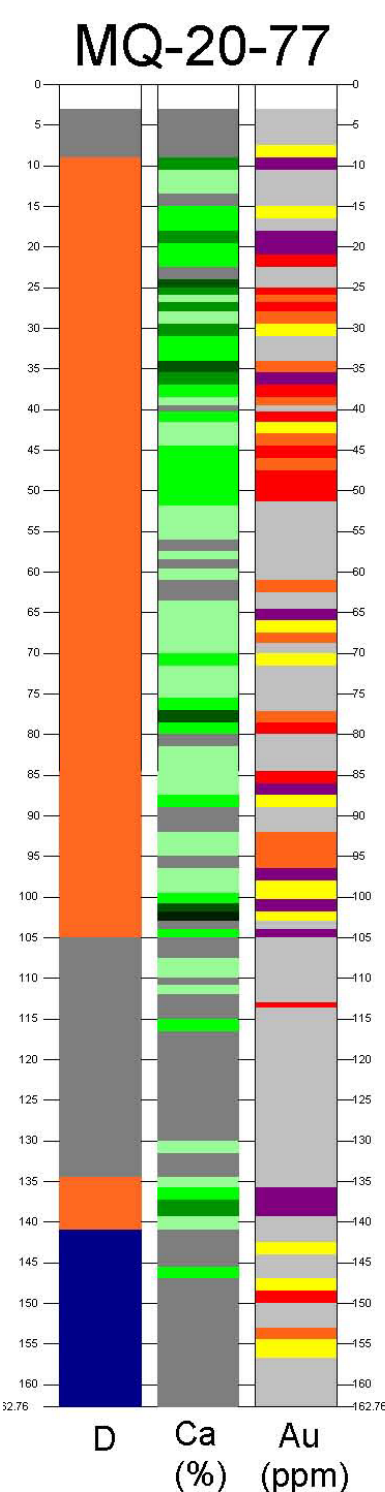
Simplified Geology

	Quartz-Feldspar Dyke
	Quartzite
	Mixed Assemblage (Calcareous)
	Mixed Assemblage (Non-Calcareous)

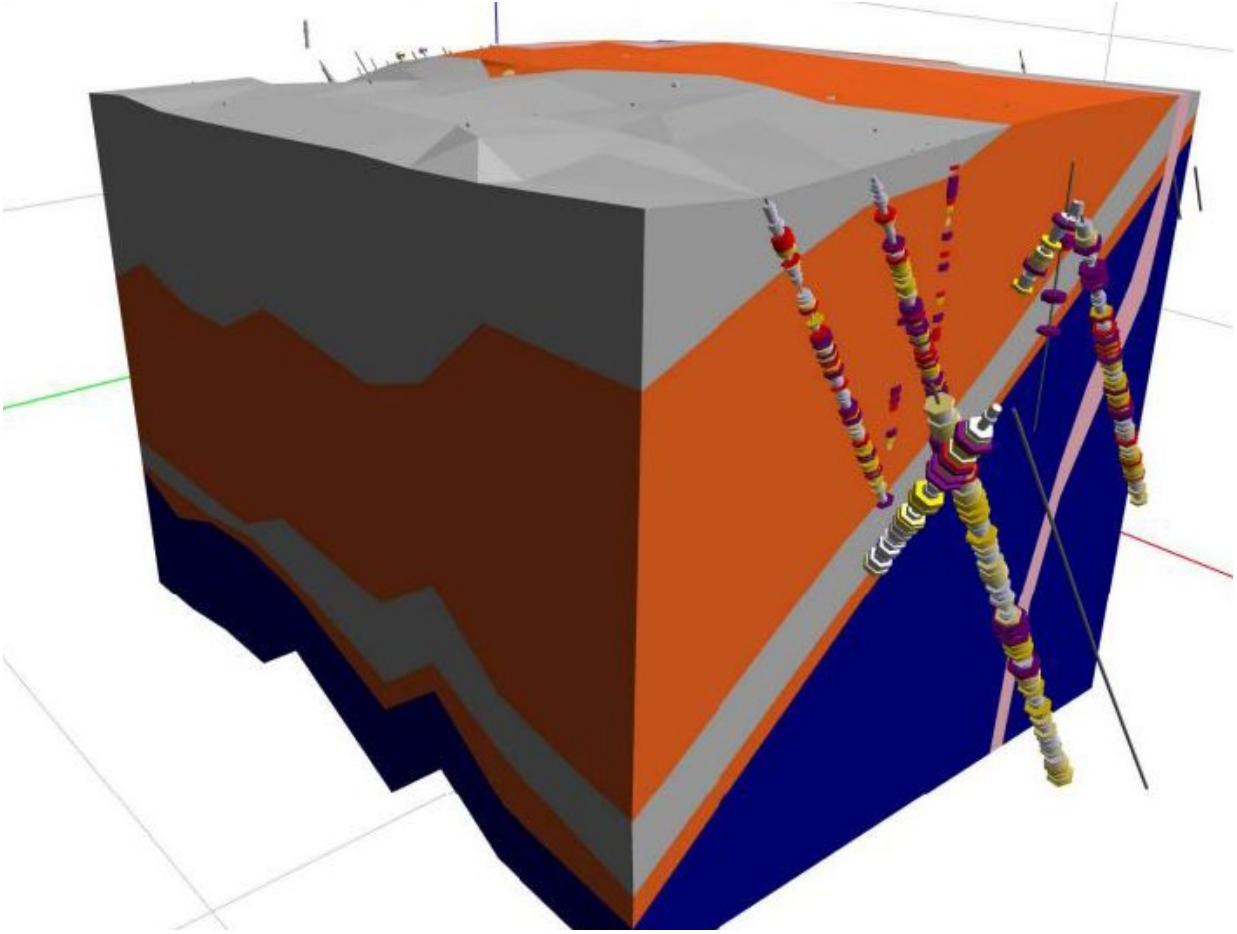
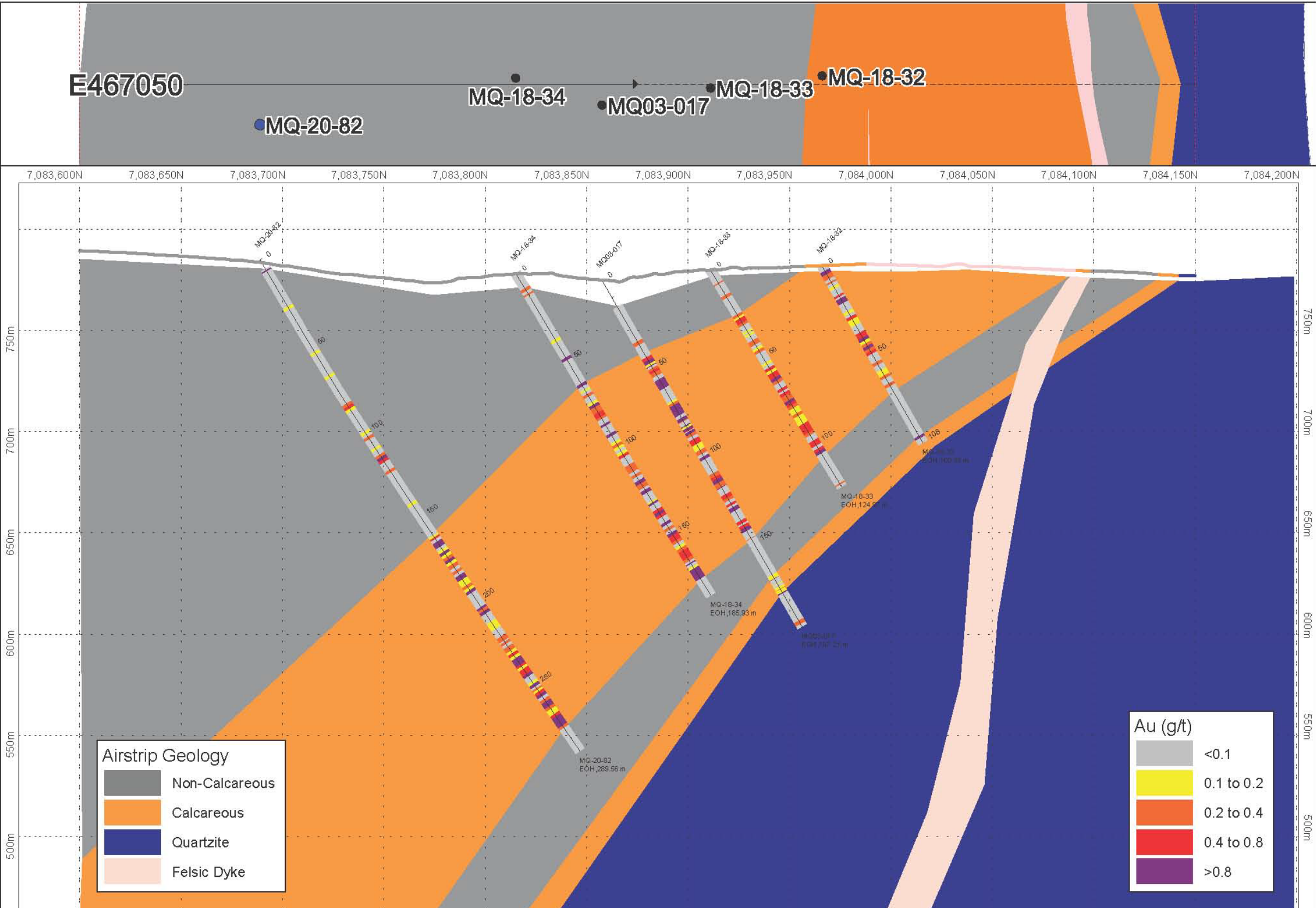


* With an aqua-regia digestion we are not dissolving calc-silicate minerals and the dominate source of calcium will be from the calcium carbonate making the calcium a proxy for the calcareous content of host rocks

CHEMO-STRATIGRAPHIC MODELLING: HOLE BY HOLE COMPARISONS

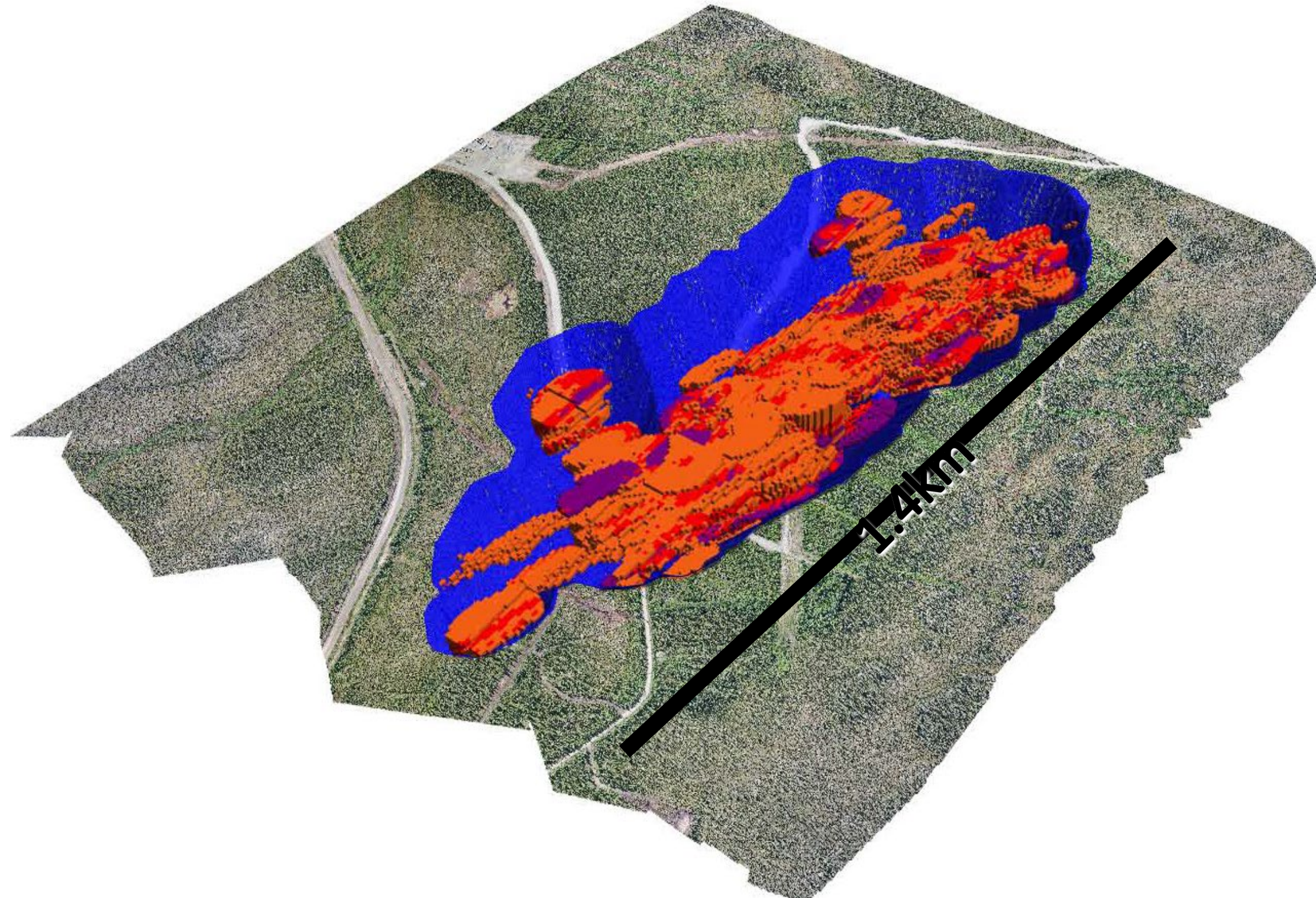


BUILDING GEOLOGIC DOMAINS FROM GEOCHEMICAL DATA SECTION BY SECTION – THE PATHWAY TO DISCOVERY



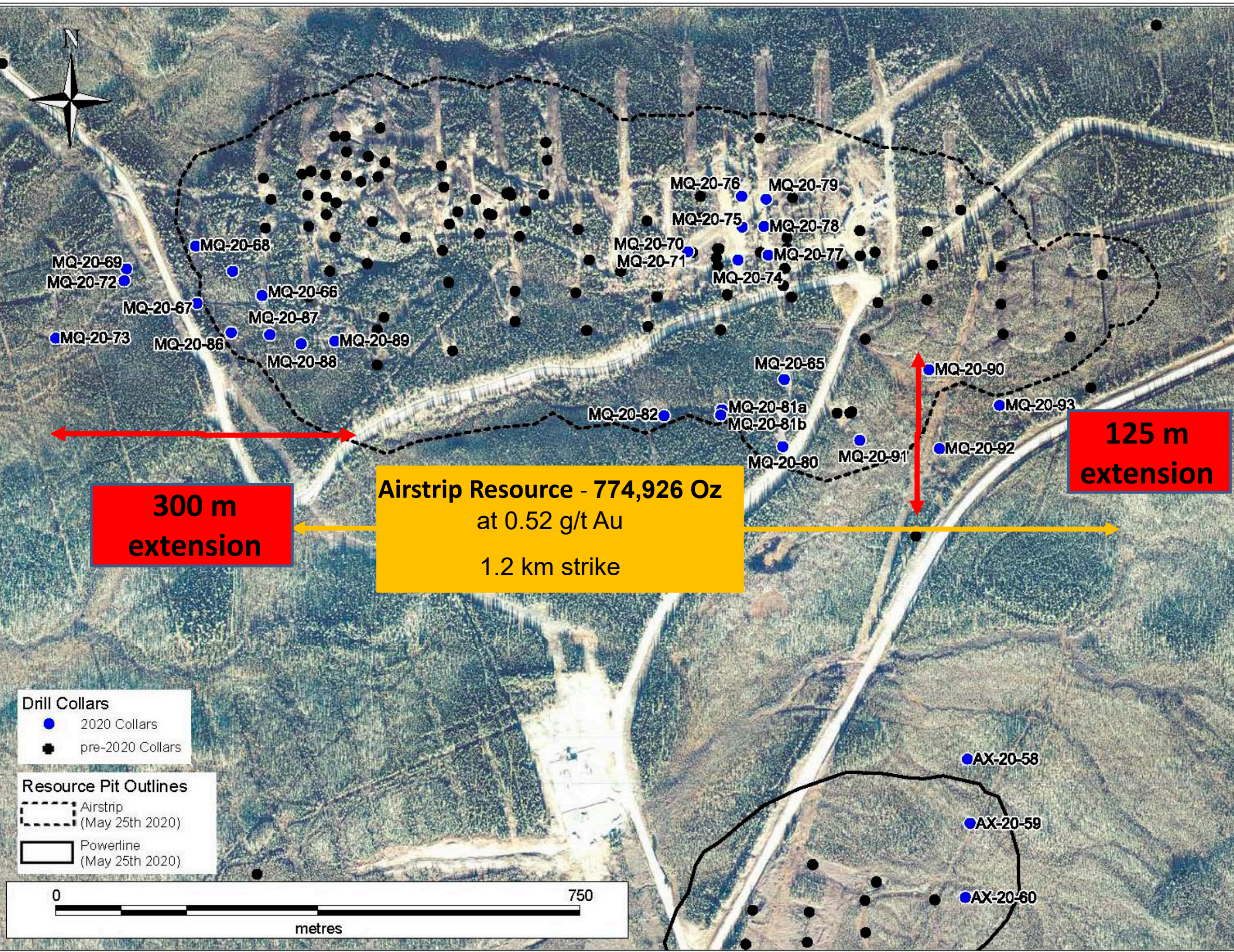
AURMAC PROPERTY: THE AIRSTRIP ZONE'S INFERRED GOLD RESOURCE

Pit-Constrained Inferred Mineral Resources at a 0.2 g/t Au Cut-Off



Tonnes	Au Grade (g/t)	Contained Au (oz.)
45,997,911	0.524	774,926

AURMAC PROJECT 2020 – AIRSTRIP EXTENSION



Highlights:

- 0.75 g/t Au over 116 m
- 0.74 g/t Au over 113 m
- 0.92 g/t Au over 63.5 m
- 0.89 g/t Au over 59.2 m
- 0.62 g/t Au over 59.8 m

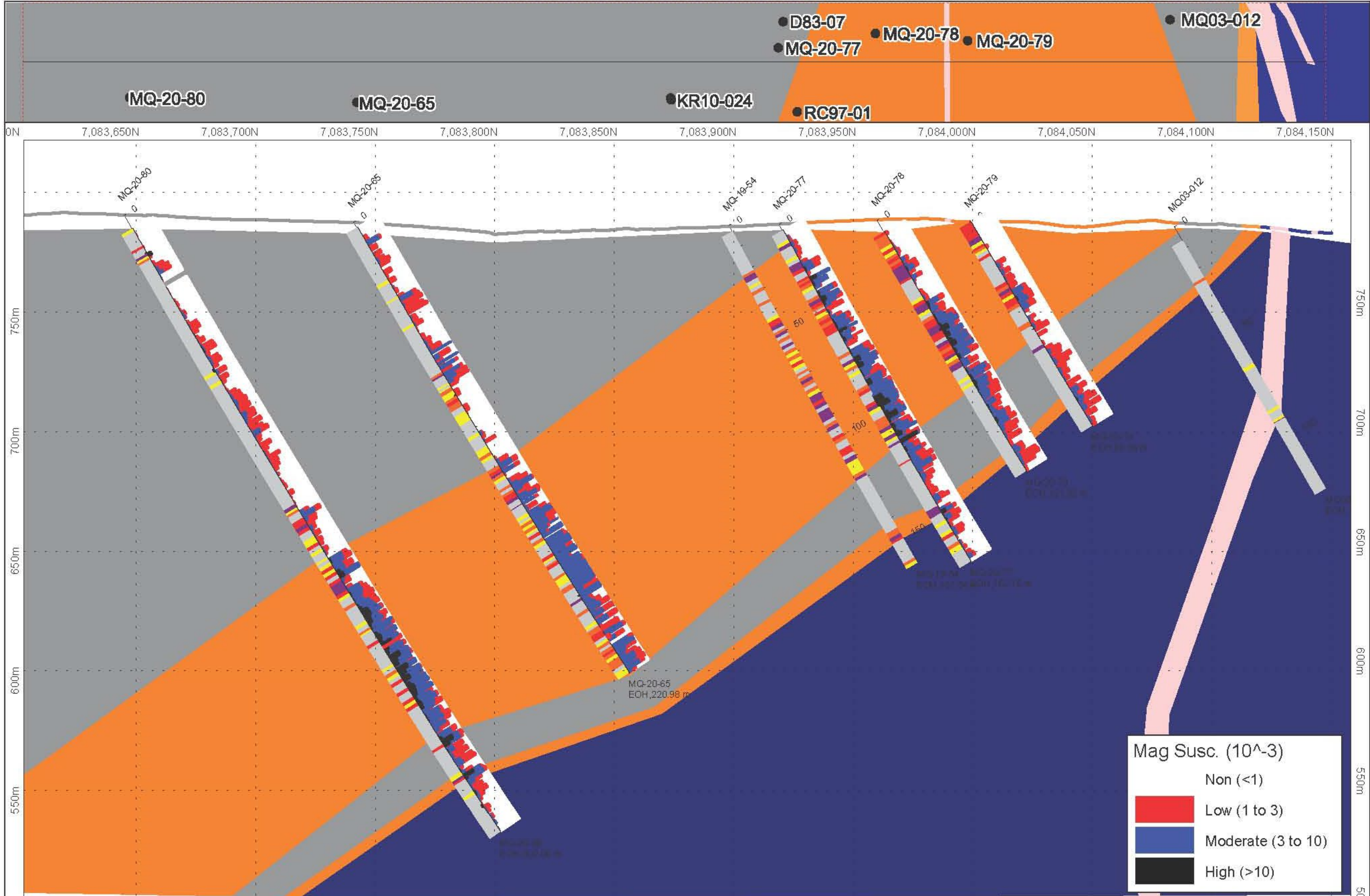
- 8.33 g/t Au over 1.4 m
- 2.38 g/t Au over 10.6 m
- 4.82 g/t Au over 3.4 m
- 19.5 g/t Au over 0.7 m
- 8.64 /t Au over 1.5 m
- 18.4 g/t Au over 2.1 m
- 2.62 g/t Au over 6.0 m
- 27.7 g/t Au over 1.5 m

- Exploration Expenditures met for full 100% earn-in on option

BEYOND GEOCHEMISTRY – MAGNETIC SUSCEPTIBILITY: PYRRHOTITE A PROXY FOR GOLD MINERALIZATION



MAGNETIC SUSCEPTIBILITY: CORRELATION WITH GOLD





Typical Calcareous Package

- Upper Sourdough Formation – above the basal quartzite (Keno Hill Host)
- Strong retrograde skarn alteration with semi-massive to massive pyrrhotite +scheelite+gold anomalous in bismuth+selenium+tellurium
- ***Reduced Intrusion related Au System***

MQ-19-44: 3.07 g/t Au over 8.8m from 127.4m

AURMAC STYLES OF MINERALIZATION



Actinolite-Chlorite-Quartz (Retrograde Skarn Alteration) carbonate replacement with disseminated pyrrhotite minor arsenopyrite and Chalcopyrite

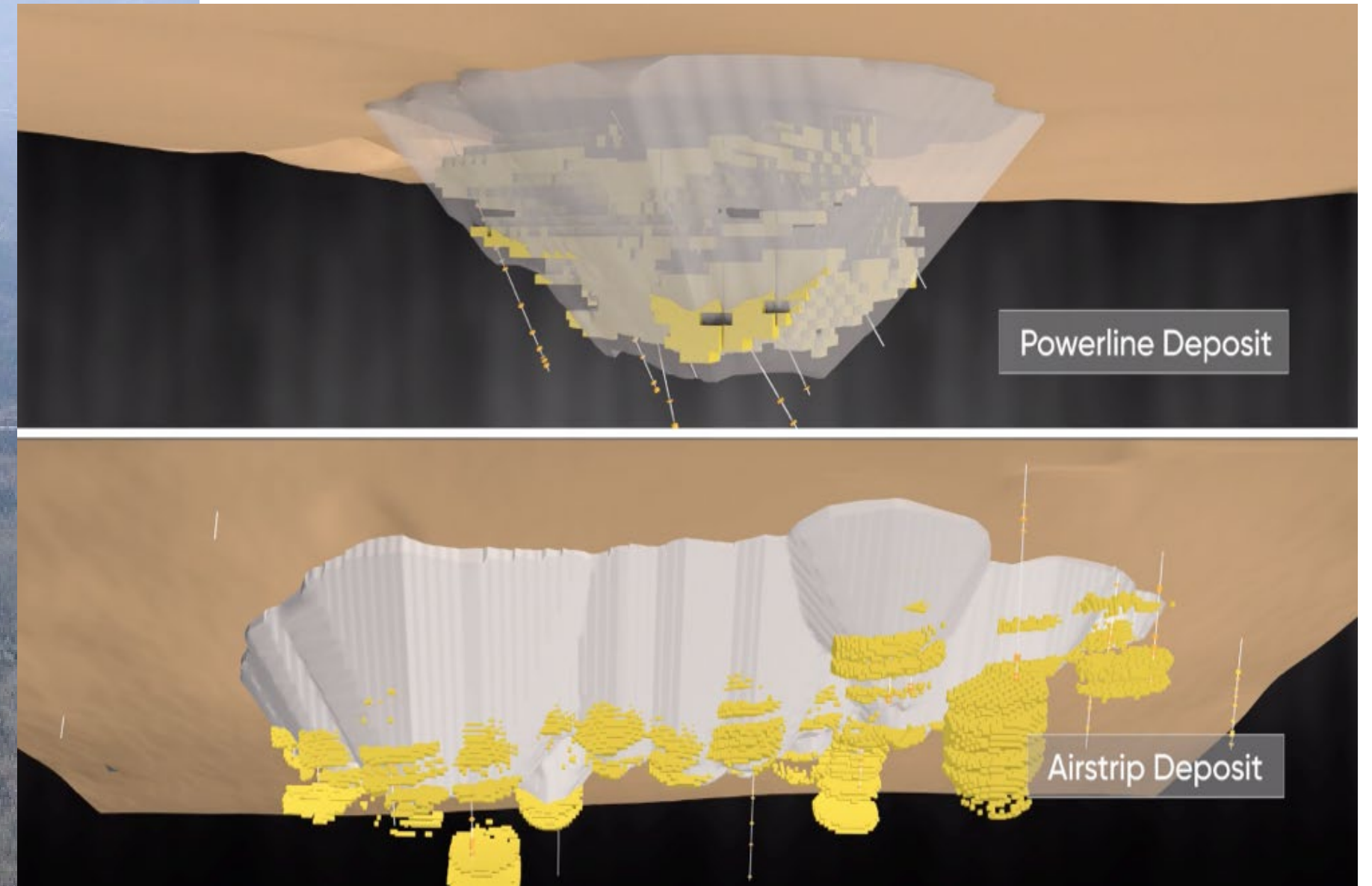


Sheeted Quartz-Chlorite Veins with Pyrrhotite



Siderite-Sphalerite-Galen

AURMAC GOLD PROJECT – AIRSTRIP & POWERLINE



2020 Resource: 903,945 Ounces Au, 0.535 g/t Au

Airstrip	774,926 Oz. at 0.52 g/t Au
Powerline	129,019 Oz. Au at 0.61 g/t Au

Pit Constrained – near surface/on surface at a 0.2 g/t Au cutoff) (NI 43-101)

Reference July 7, 2020 Technical Report Marc Jutras, P.Eng, M.A.Sc., Ginto Consulting Inc. LG pit shell at Gold price \$1500 USD/oz.

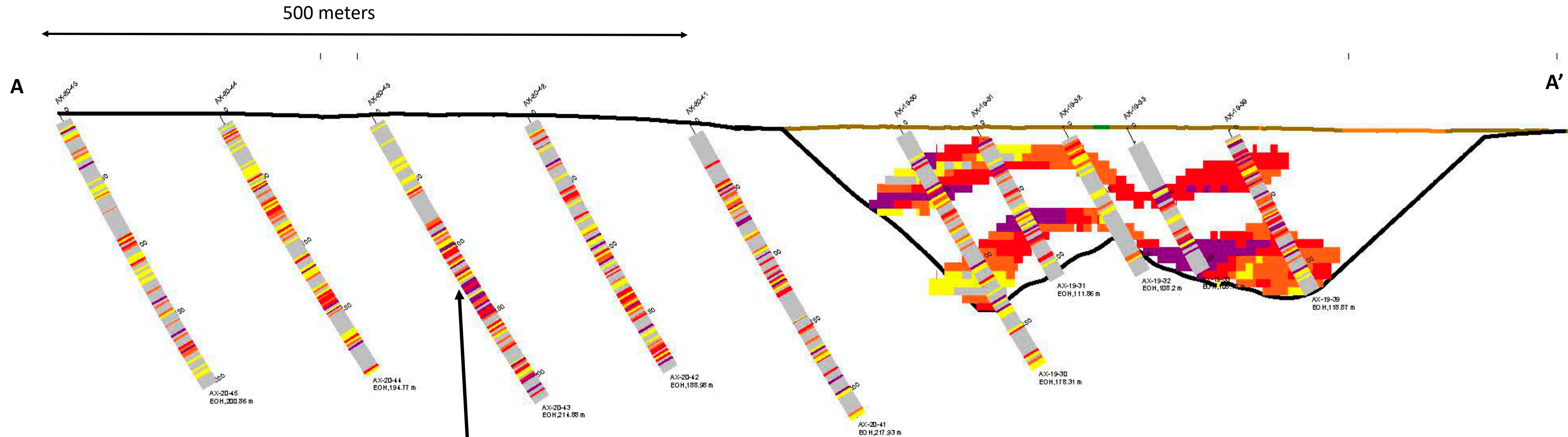
POWERLINE CORE: DISCORDANT QUARTZ VEINS POINT THE WAY



AX-19-30: 1.46 g/t Au over 7.4 m to 44.2 m

AURMAC PROJECT 2020 – POWERLINE ZONE

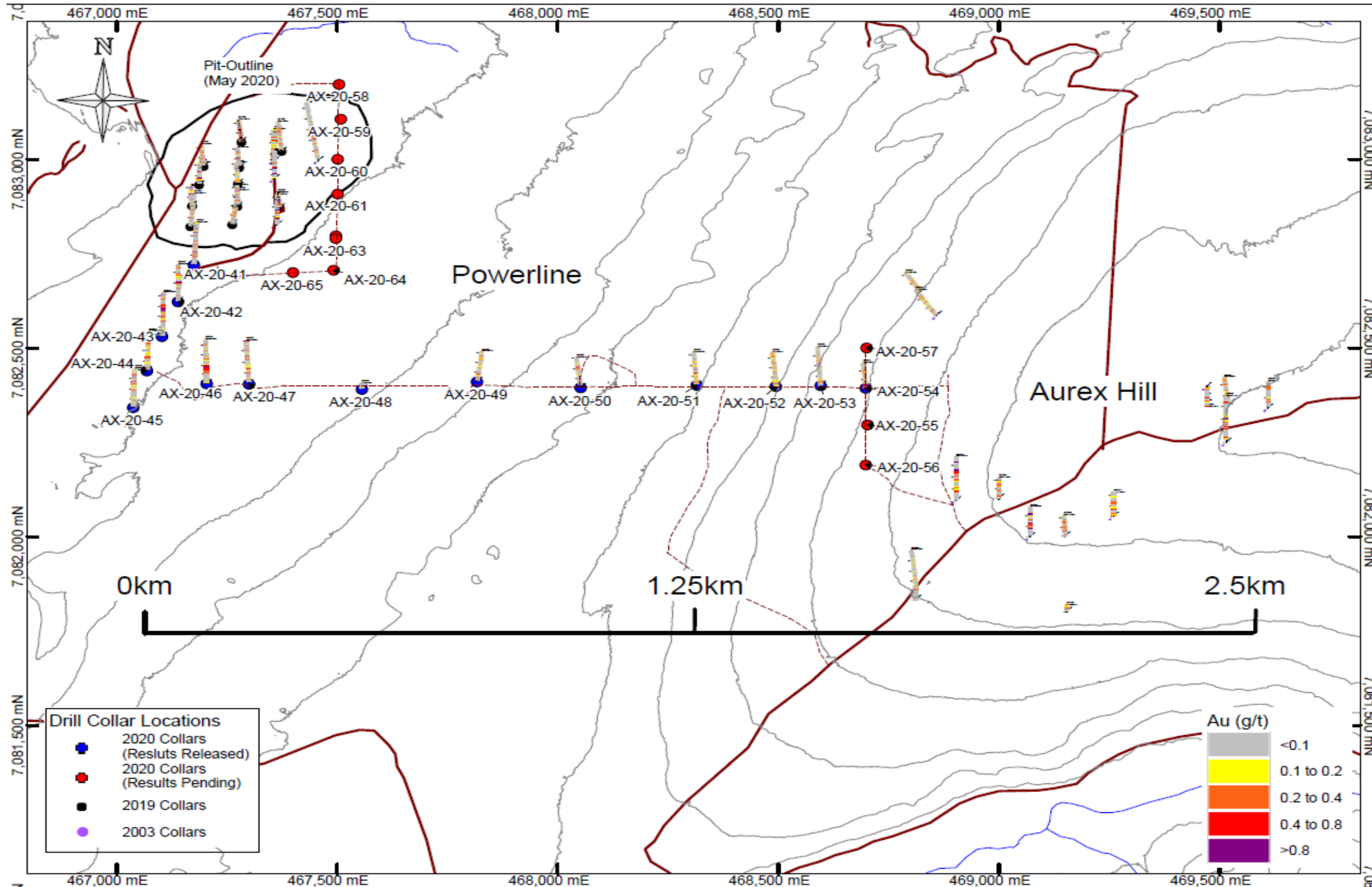
500M STRIKE EXTENSION CONSISTENT WITH MODEL



Highlight: 1.07 g/t Au over 68.5 m

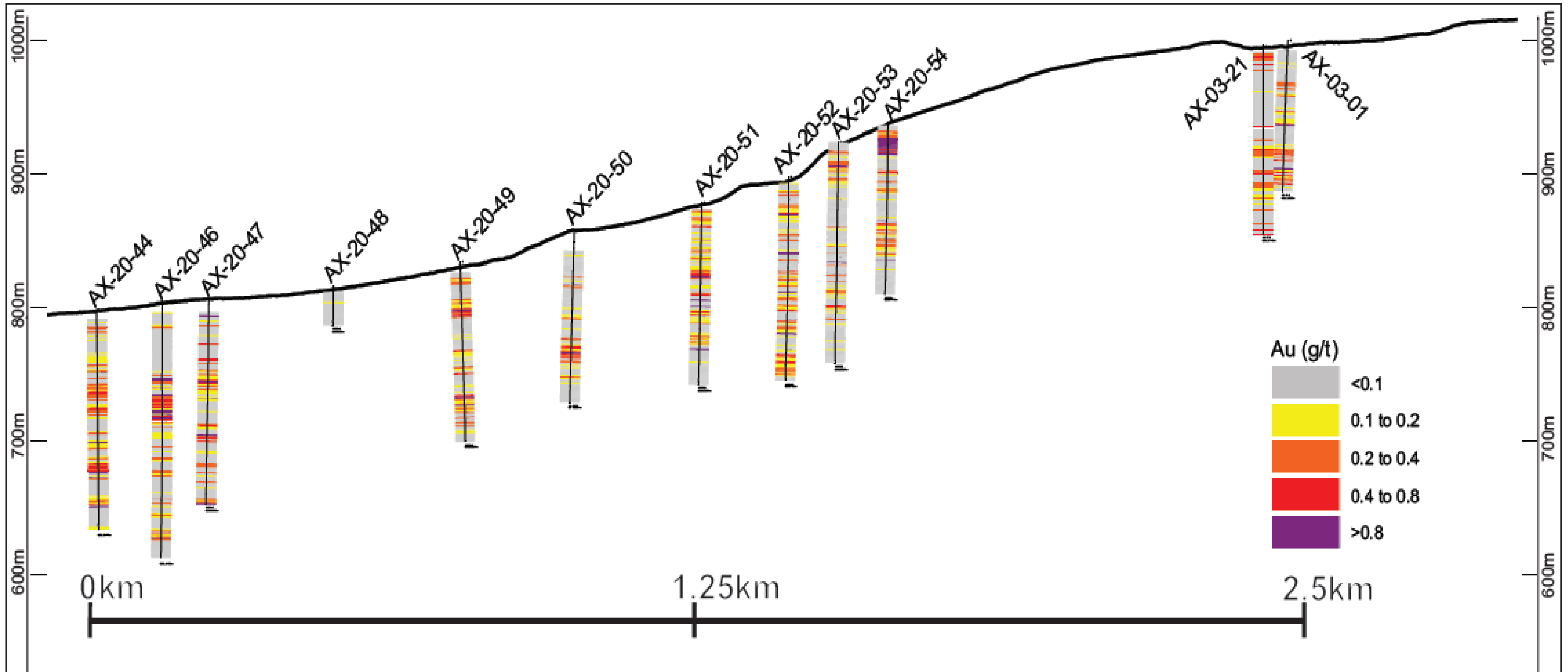
“Part of a much larger gold system than Powerline Resource”
Powerline open in all directions and at depth

2.5 KM OF MINERALIZATION FROM POWERLINE TO AUREX HILL

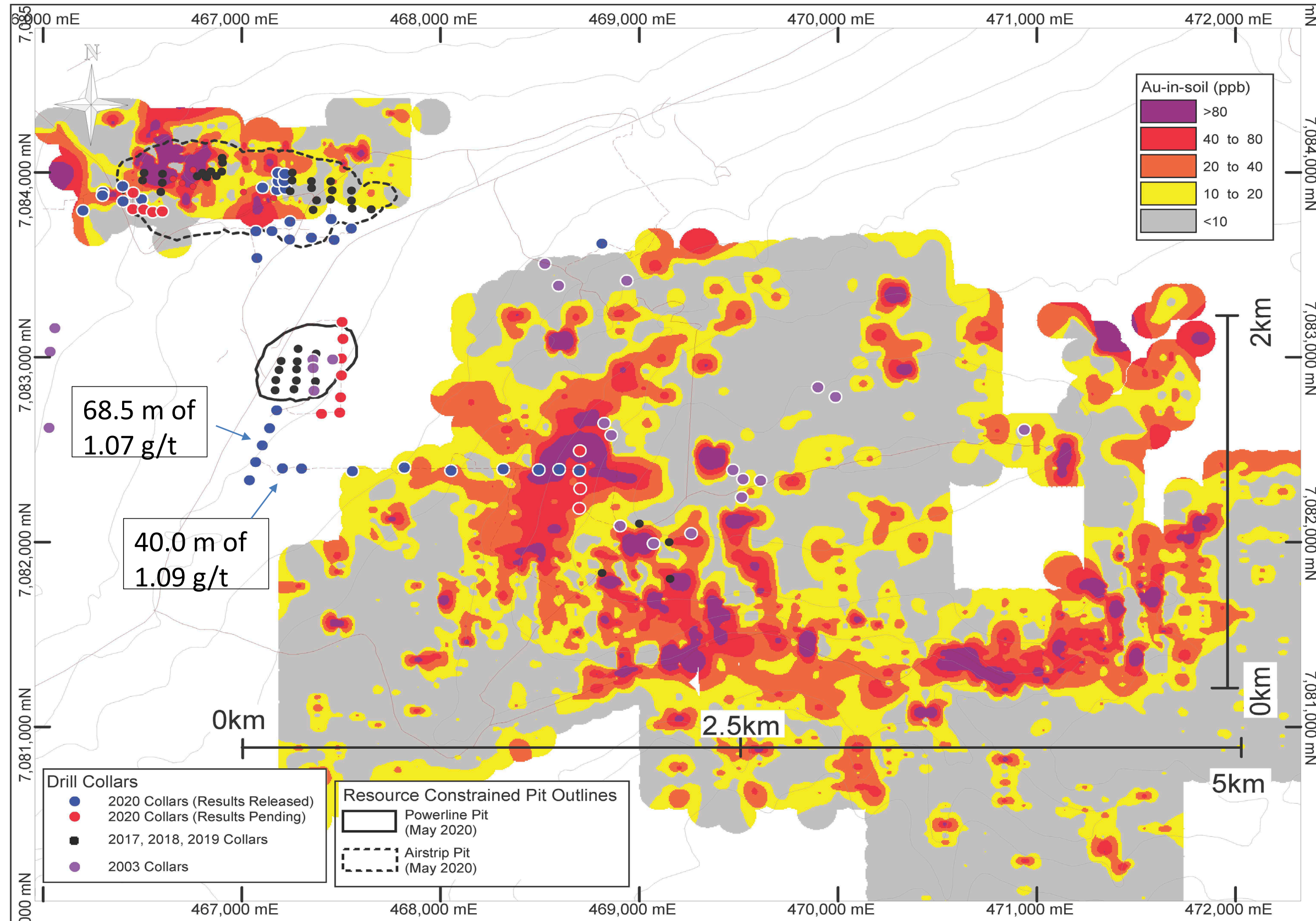


- Mineralization demonstrated over 2.5 KM from Powerline to Aurex Hill
- Dominant control on mineralization:
 - stratigraphic at Powerline
 - structural at Aurex Hill

2.5 KM OF MINERALIZATION FROM POWERLINE TO AUREX HILL

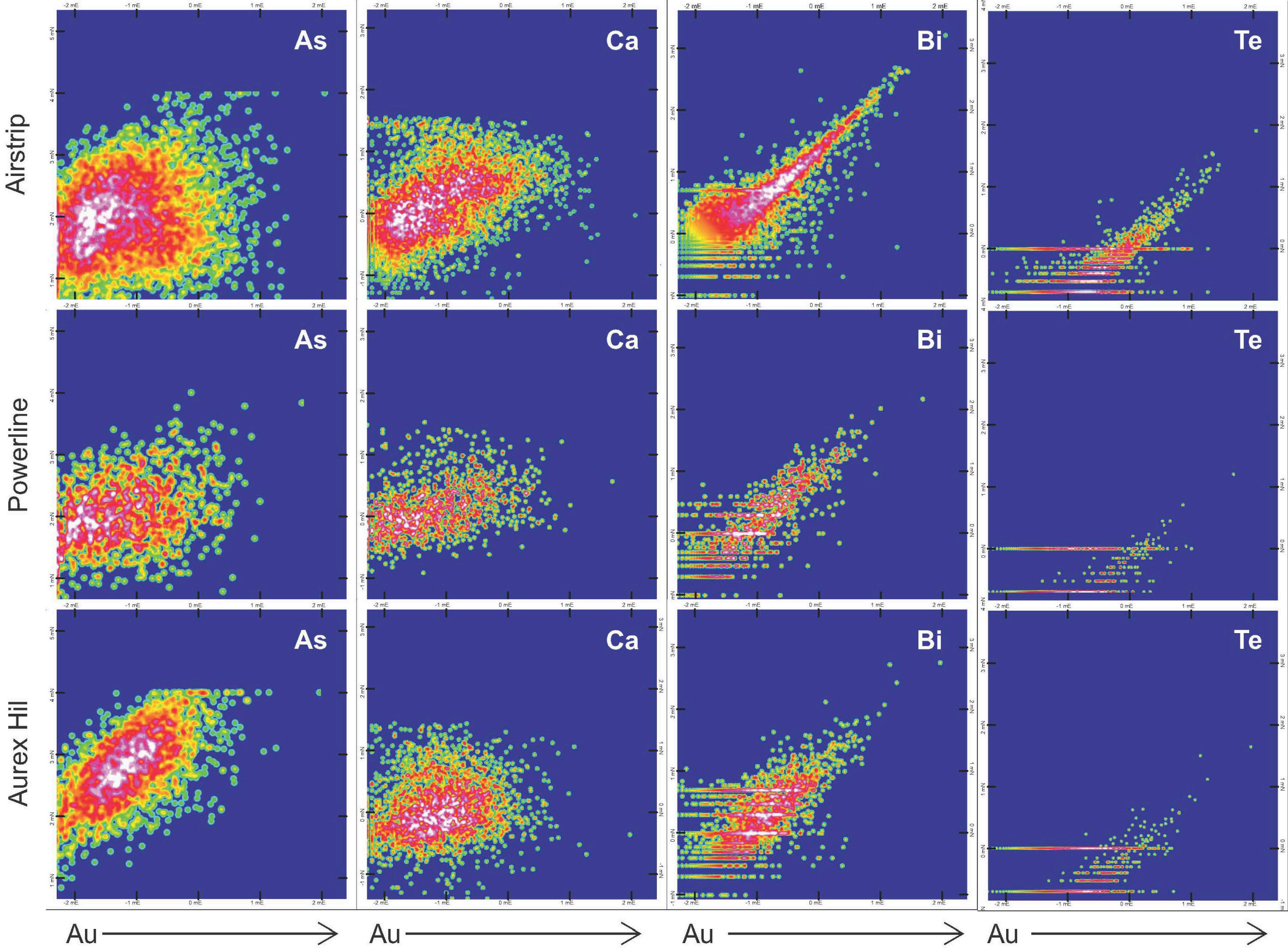


AIRSTRIP AND AUREX HILL – AU-IN-SOILS ANOMALIES



- Au-in-soils anomalies (10 km²)
- Au-in-Soil anomalies are caused by extensive discordant sheeted quart-arsenopyrite veins and deep oxidation
- Area prospective for on-surface, bulk-tonnage gold mineralization

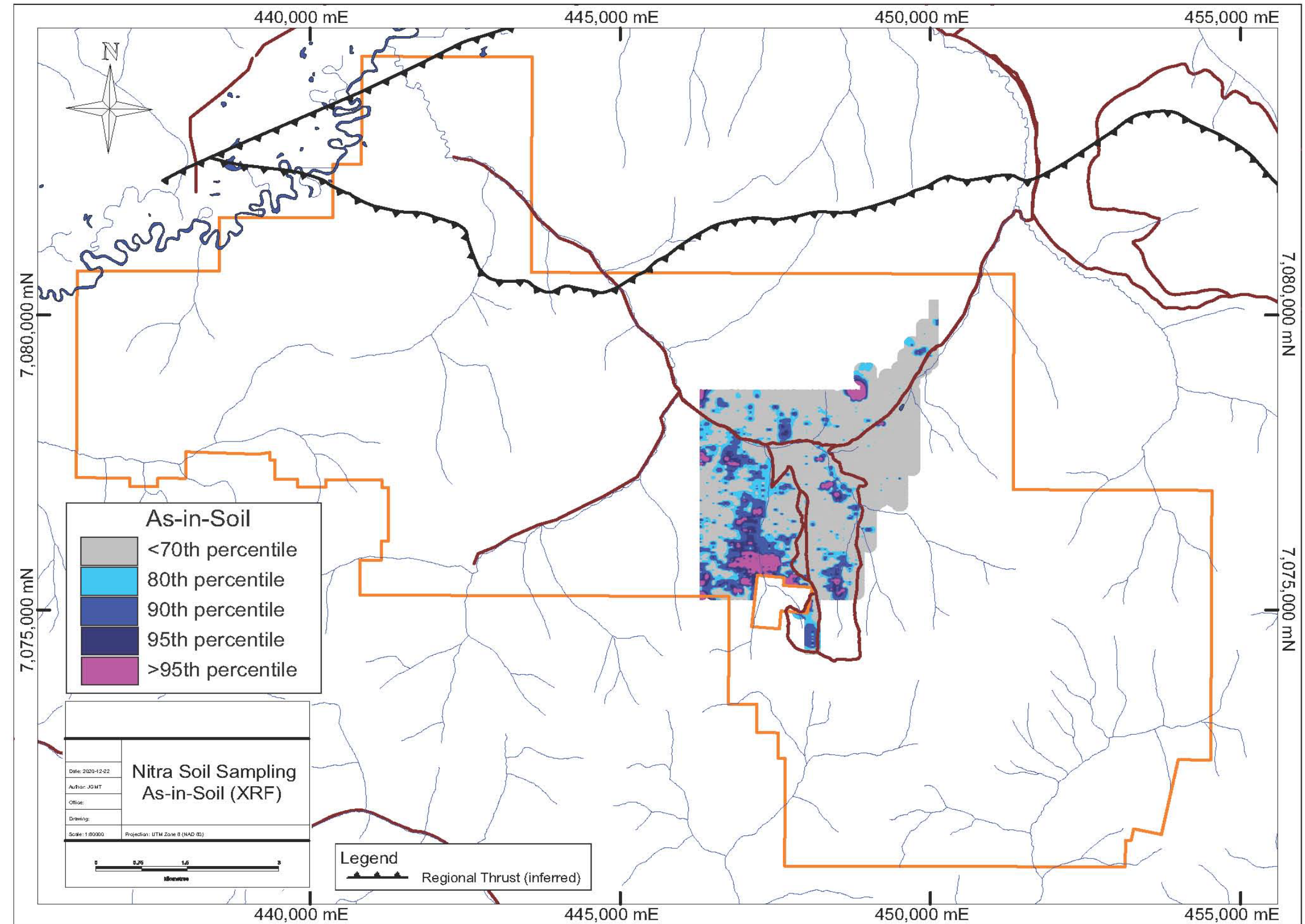
STRUCTURAL AND SEDIMENT CONTROLLED GEOCHEM – DISTRICT MODEL



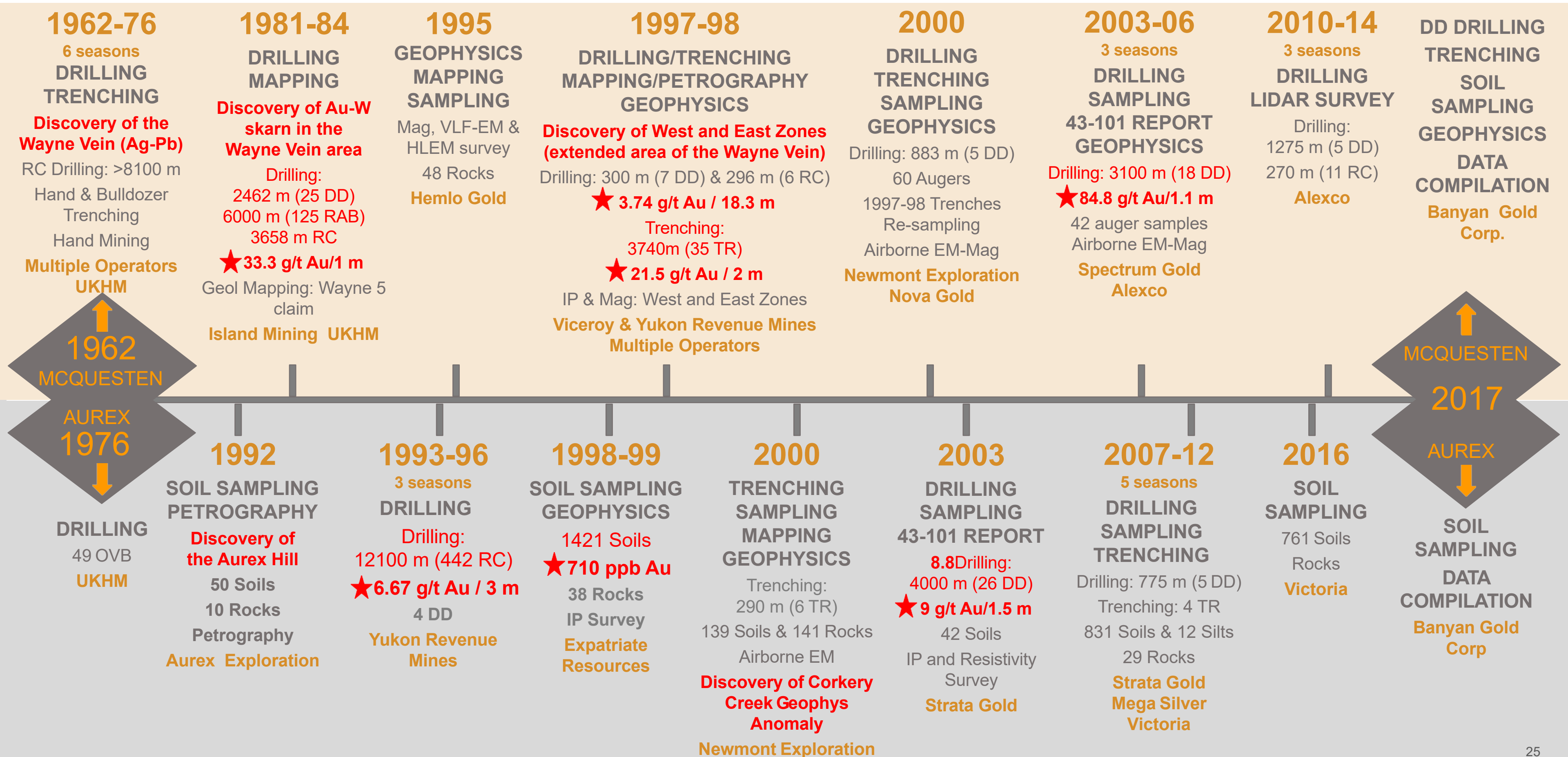
- All zones show strong Au-Bi-Te signature
- Stratigraphically controlled mineralization shows a Au-Ca Trend
- Structurally controlled mineralization shows a Au-As trend

NITRA GOLD TARGET

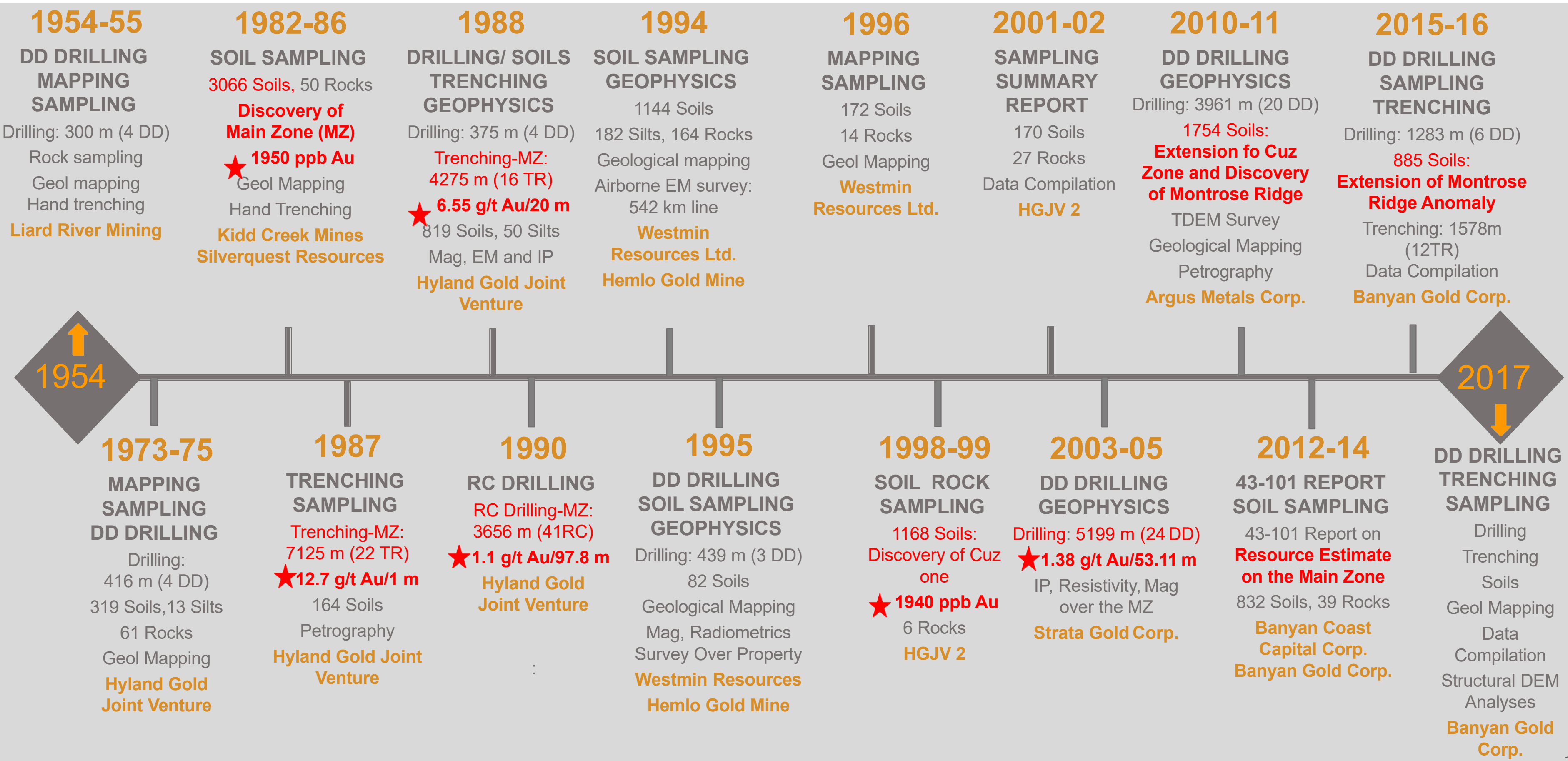
- As-in-soil anomaly, coincident with similarly oriented Pb- and Zn-in-soil anomalies.
- Dominant NNW mineralized trend
- Geological model applied to a new area in the district
- Aggressive soil sampling program ongoing in 2021



TIMELINE OF AURMAC DISCOVERY

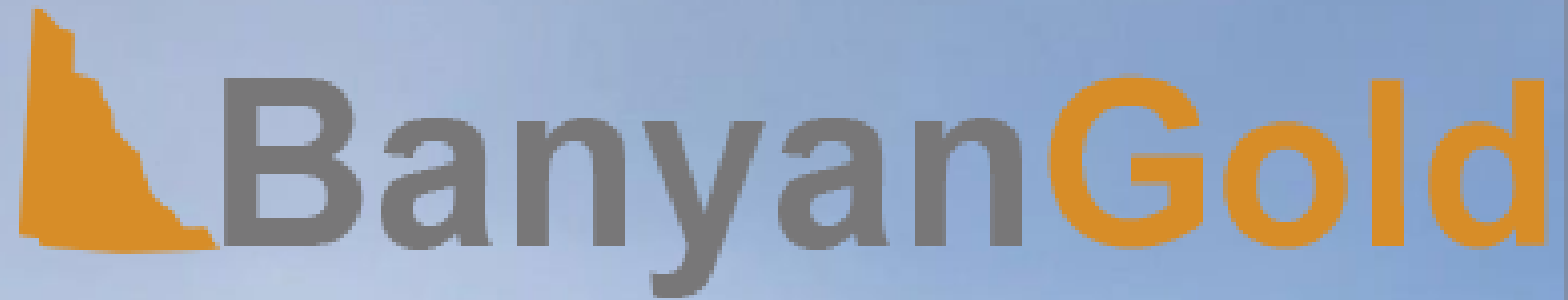


TIMELINE OF HYLAND DISCOVERY



SUMMARY AURMAC SUCCESS

- 1 Compile ALL the Data
- 2 New perspective - Why?
- 3 Build a geologic model: in this case Geochem
- 4 Drill test the model
- 5 Gather all info - Mag Sus in this case
- 6 Build on success - apply model new areas




INVEST ALONGSIDE SOME OF THE BEST!

EMAIL: info@banyangold.com

WEBSITE: www.BanyanGold.com

 @BanyanGold

 Banyan-Gold-Corp

 BanyanGoldCorp

 Banyan Gold

BUILDING GOLD RESOURCE TO FILL THE UPCOMING DEMAND

